



£185,000

Fox Street, Kirkby-In-Ashfield,
Nottingham,

Welcome to **BuckleyBrown**, where every home is carefully presented, so you can explore with clarity and confidence.

BuckleyBrown
ESTATE AGENTS

"A fully move-in-ready bungalow, something that's becoming harder to find in today's market. Don't miss your chance to snap this up before it's gone!"

- Luke, Senior Valuer



BEYOND EXPECTATIONS

Offered to the market with no upward chain, this move-in-ready two-bedroom bungalow presents an excellent opportunity for those seeking convenient single-storey living.

Beautifully presented throughout, the property offers well-proportioned accommodation that is ready to be enjoyed from day one. Externally, ample secure off-road parking provides both practicality and peace of mind, complementing this superb home.



THE FINER DETAILS

A well-presented home offering a practical layout and excellent outside space, ideal for a range of buyers.

The property offers well-planned and modern accommodation, featuring a fully equipped contemporary kitchen and a spacious living room with French doors opening directly onto the rear garden, creating a bright and welcoming reception space ideal for both relaxing and entertaining.

To the first floor, there are two well-proportioned bedrooms, each offering a versatile "blank canvas" for the next owner, alongside a modern three-piece bathroom suite complete with an overhead shower, finished to a practical and tasteful standard.

Externally, the property benefits from a lengthy private driveway to the front providing ample off-road parking and leading through to a double garage at the rear. The enclosed rear garden is well maintained, featuring a neatly kept lawn and a patio seating area, making it an ideal space for outdoor dining and leisure.





BuckleyBrown
ESTATE AGENTS







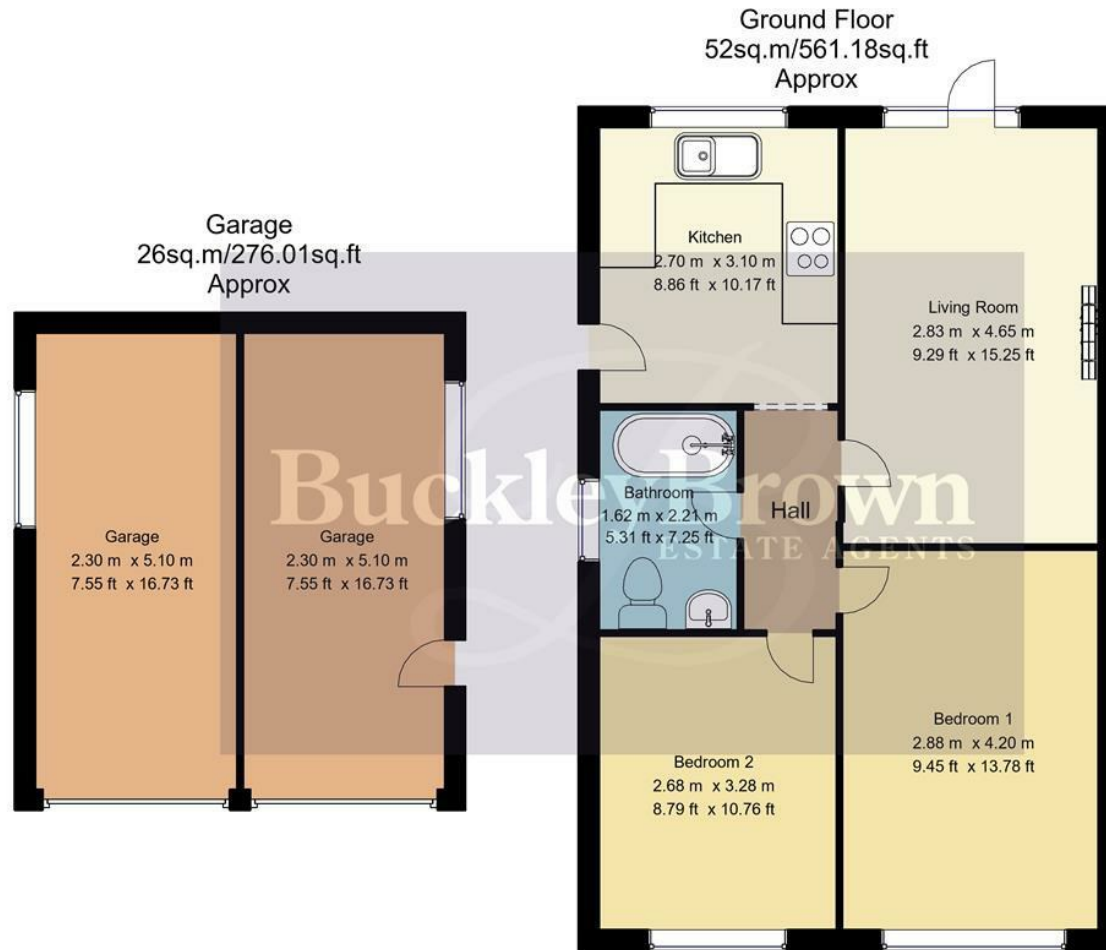
LIFE IN KIRKBY-IN-ASHFIELD

Kirkby-in-Ashfield is a well-connected Nottinghamshire town offering a strong sense of community alongside a wide range of everyday amenities.

The town centre provides supermarkets, independent shops, cafés, pubs, and essential services, while well-regarded schools and healthcare facilities make it a practical choice for families. Excellent transport links, including nearby access to the A38 and M1, ensure straightforward travel to Nottingham, Mansfield, and surrounding areas.

The area is also surrounded by attractive green spaces and countryside, offering plenty of opportunities for walking, cycling, and outdoor leisure. Popular nearby spots such as Kings Mill Reservoir and the surrounding Sherwood Forest landscape provide a welcome escape from daily life, while local parks, sports clubs, and leisure facilities further enhance the town's appeal for a balanced and active lifestyle.





Whilst every attempt has been made to ensure the accuracy of the floor plan contained here, no responsibility is taken for incorrect measurements of doors, windows, appliances and room or any error, omission or misstatement. Exterior and interior walls are drawn to scale based on interior measurements. Any figure given is for initial guidance only and should not be relied on as basis of valuation. These plans are for marketing purposes only and should be used as such by any prospective purchase. Specially no guarantee is should not be relied on as a basis of valuation. These plans are for marketing purposes only and should be used as such by any prospective purchase. Specifically no guarantee is given on the total square footage of the property if quoted on this plan.

Key Features

Well presented, move in ready condition

Contemporary fitted kitchen

Spacious living room with french doors to the garden

Two blank canvas bedrooms

Lengthy driveway with two single garages



These particulars are intended as a guide only and do not form part of any offer or contract. All descriptions, measurements, images and plans are provided for illustration purposes and should not be relied upon as statements of fact. Prospective purchasers should satisfy themselves as to the accuracy of the information. Buckley Brown Estate Agents accept no liability for any loss arising from reliance on these details.

© Buckley Brown Estate Agents 2026. All rights reserved.

Exceptional homes deserve
exceptional representation.

Let's Chat.

01623 633633

mansfield@buckleybrown.co.uk

buckleybrown.co.uk

BuckleyBrown
ESTATE AGENTS